

iProtoXi

FULL STACK IOT SERVICES

Janne Kallio

- » CEO & COB, Co-founder
- » +25 years experience in telecommunication systems and IoT



iProtoXi Oy/Ltd

- Located Oulu, Finland
- Founded 2012
- Group of 11 own persons + group of trusted partners
- Revenue
 - 2017 +500K€
 - 2018 +1M€ (target)
- Several happy customers
 - from start-ups to international companies
 - from wearables to industrial IoT
 - from prototypes to end devices and - solutions



Customer references

ハイカラ

HAIKARA

anaxeos

EXIOPS
excellence in operations

 **Telia**



KICK.AI

 **VEXVE**

 **Kionix**[®]
A ROHM Group Company

ROHM
SEMICONDUCTOR

MONIDOR

VESSLA

PULSE
ON

RUNTEQ

jolla

IoLiving

JOT
automation

KIPUWEX

 **VTT**

OAMK


OULUN YLIOPISTO
UNIVERSITY of OULU

Soul4Design

 Pohjois-Pohjanmaan
sairaanhoitopiiri

Solutions based on Aistin Blue platform

Development speed

- **Full SW and HW stack** for fast proof of concepts
- **Easy to tailor**, custom HW not always needed

IoT ready technology

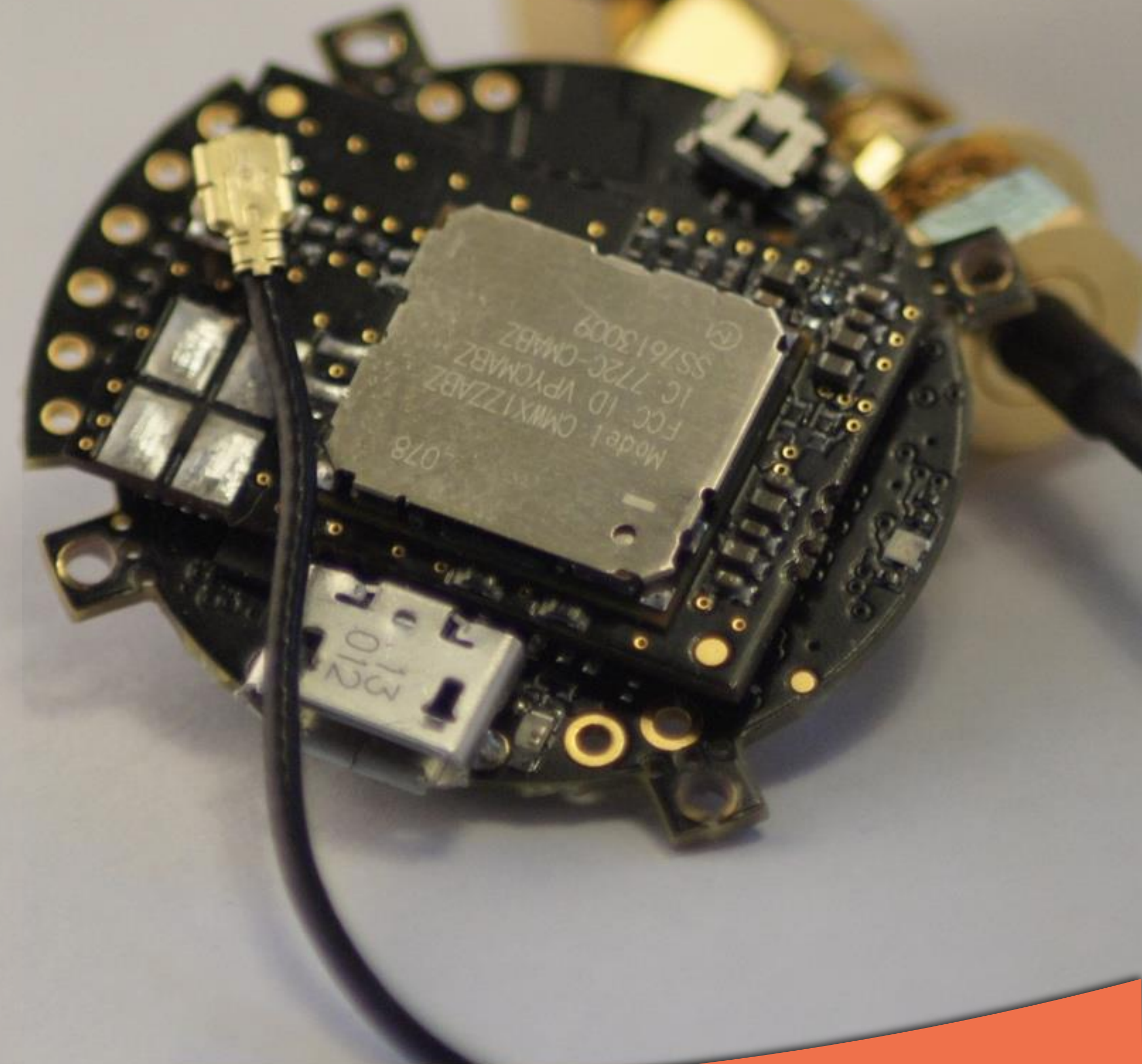
- **Rich set of sensors** for customer applications
- **Compact size** for embedded solutions

Low power, long range

- **Nordic Semi nRF52 ARM SOC** - ideal for low power IoT
- **4G NB IoT, Lora, BT5** - latest radio technology

Modular solution

- **End to end IoT** - turn key customer solutions
- **Scalable platform** - solution fitted to customer interfaces

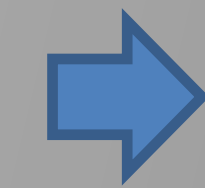


Aistin Cloud solution Scales to customer needs

Cloud layer  **Cumulocity**
connect to innovate
WolkAbout, Azure ...

 **aistin**
iProtoXi cloud

Cloud service



Aistin mobile platform 

Gateway

Cloud adaptation

Bearer adaptation



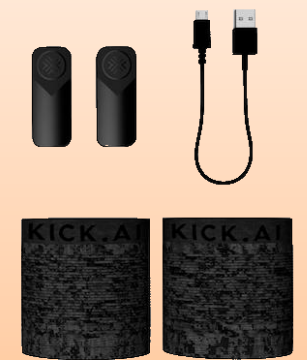
4G NB IoT
IP/UDP

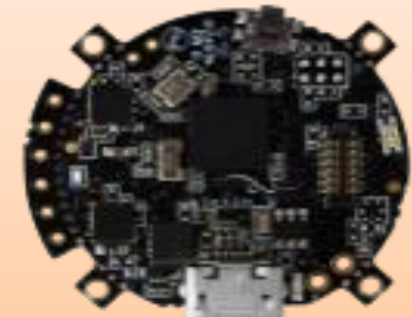
LoRa
868MHz



DATA MINING

- **Wireless interfaces** -

Device layer

Custom tailored solutions   

Blue platform 

Aistin Sensor Units  

BL-LE

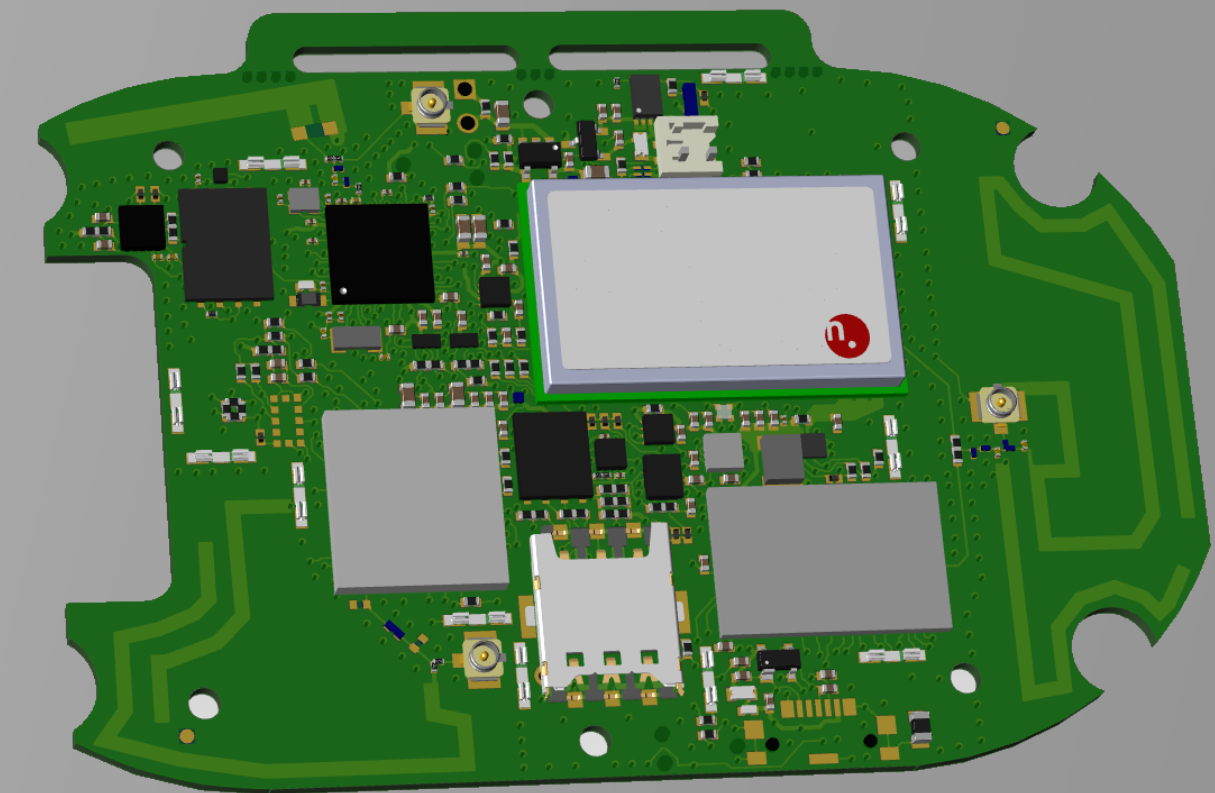
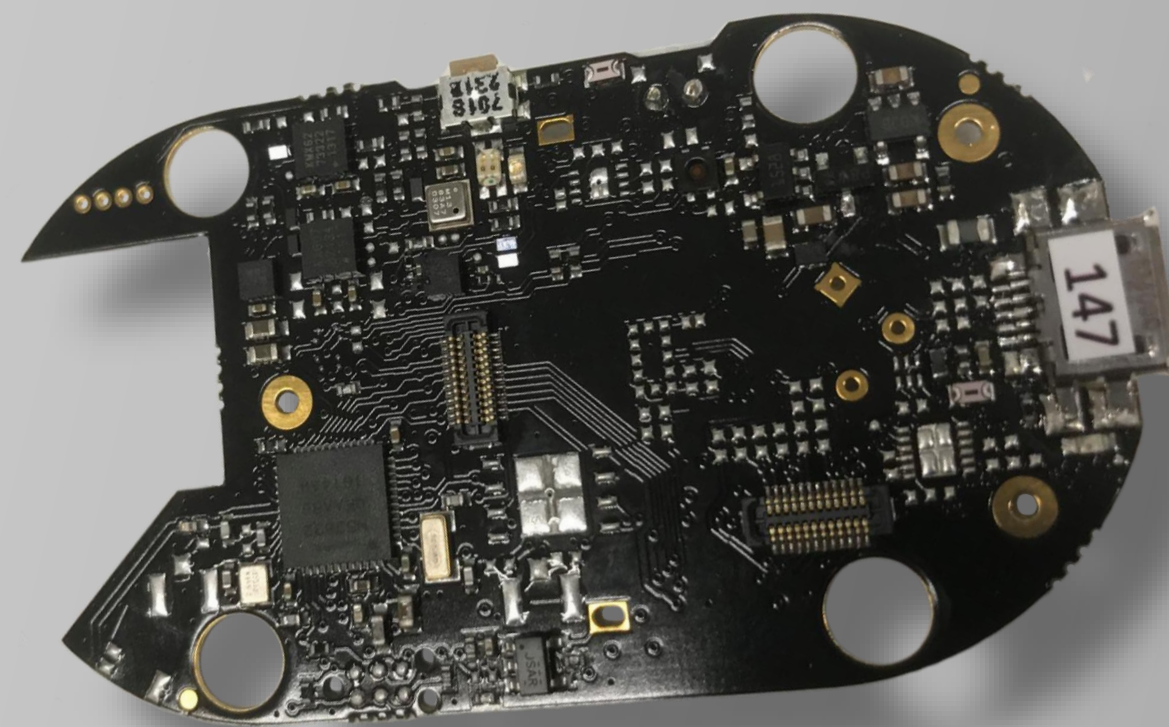
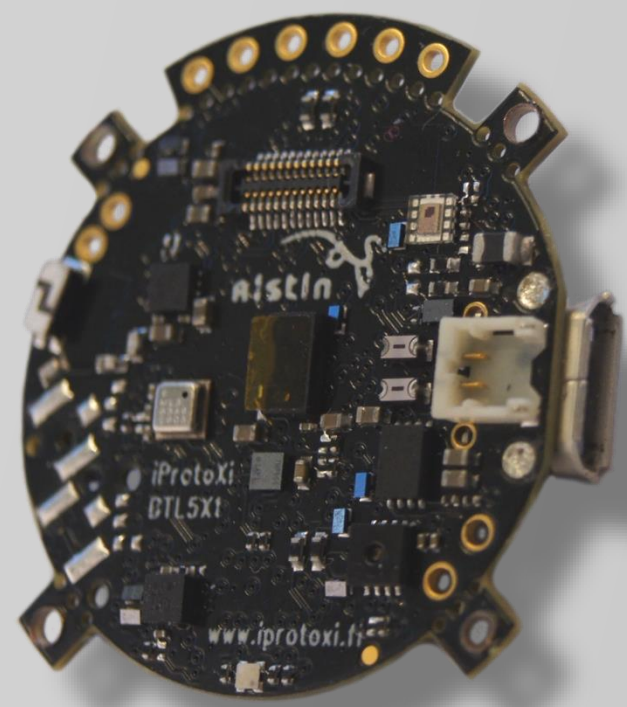
The power of modularity

» Quickly from Idea to Proof Of Concept product



Building of IoT Sensor from modules

- » Select platform from Aistin Blue family
- » Built-in Bluetooth low power / BT5

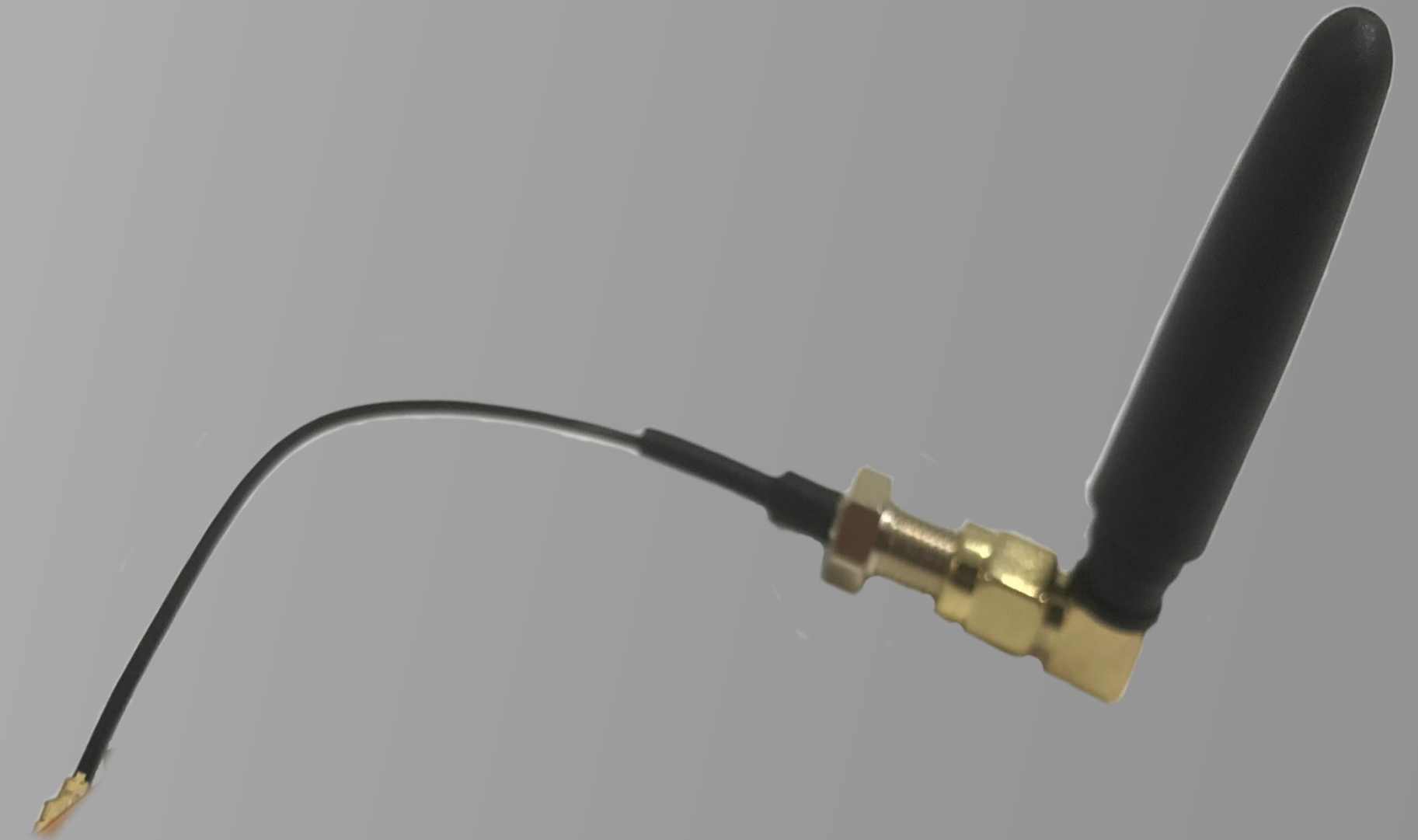
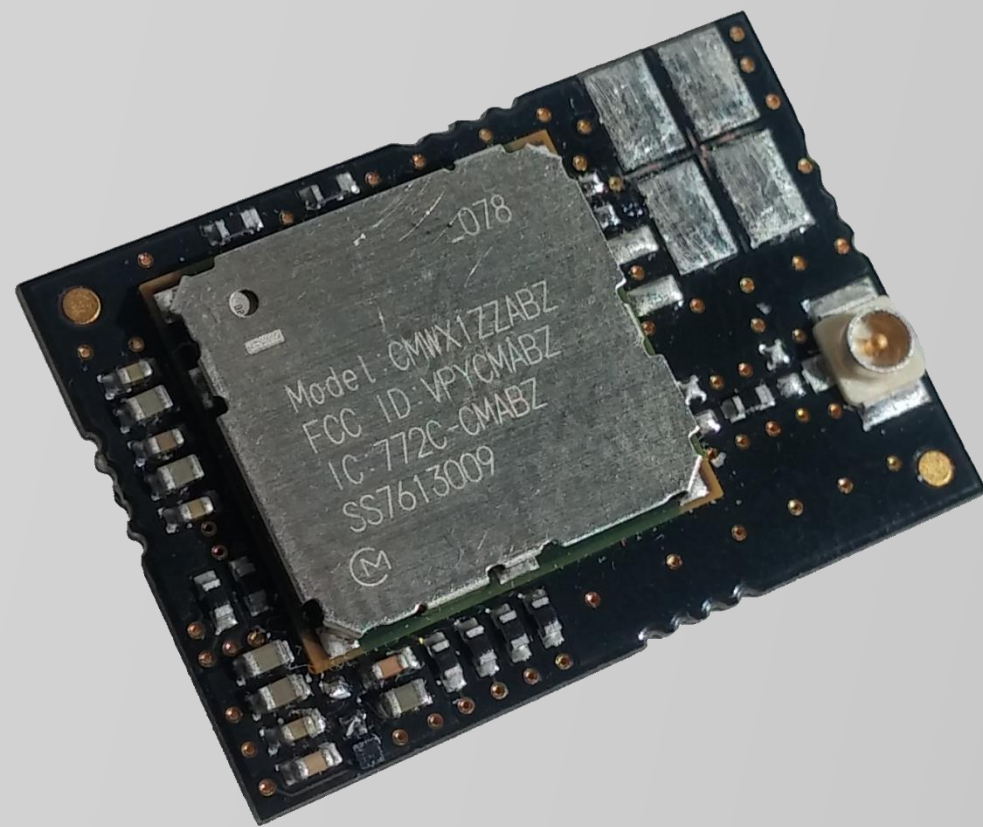


» Aistin Blue or Aistin IoT Blue or

Aistin IoT Blue
BTB1000 platform (1Q19)

Building of IoT Sensor from modules

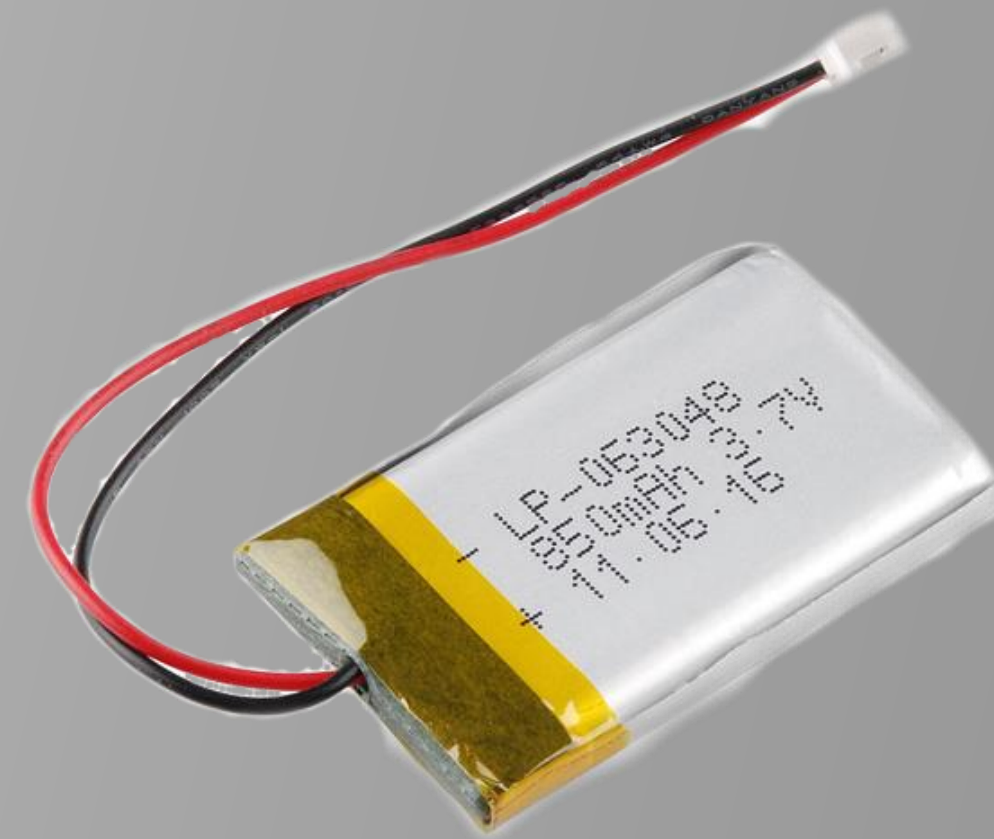
» Select Radio module and Antenna



» LoRaWAN or 4G NB-IoT

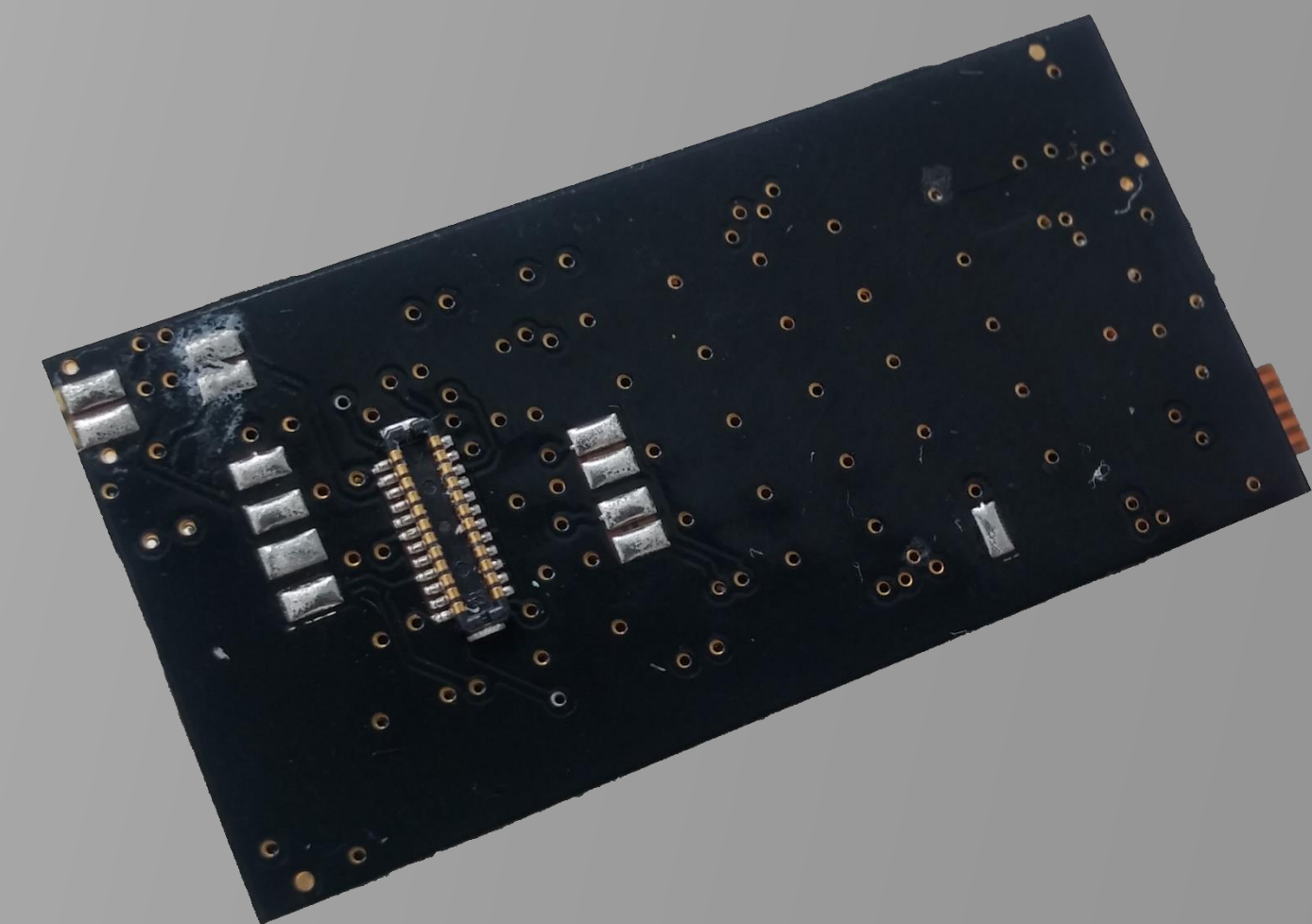
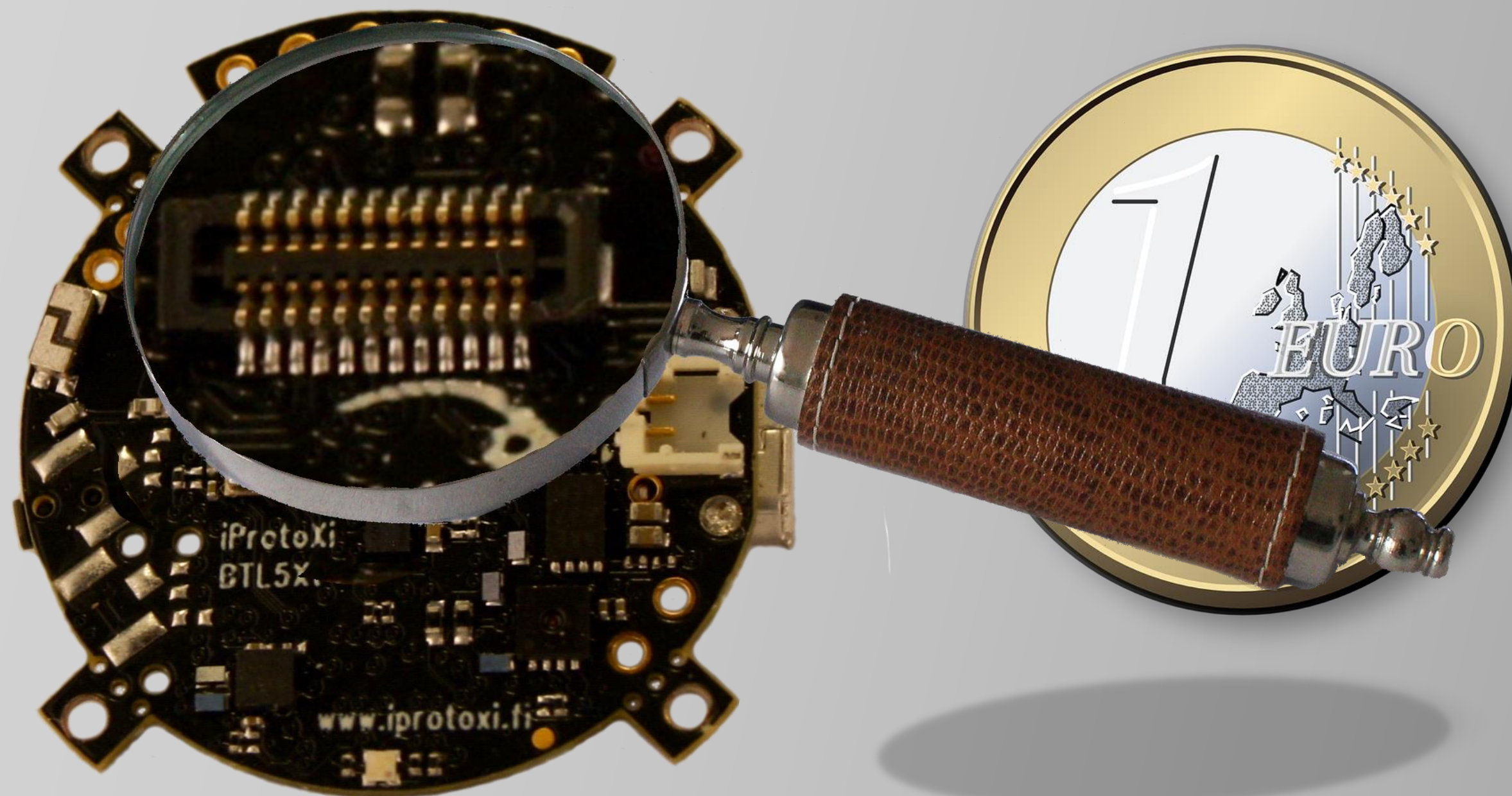
Building of IoT Sensor from modules

» Select batteries or rechargeable battery



Building of IoT Sensor from modules

- » Connect modules together using Aistin BUS24 connector
 - Open Interface Standard for Low Power IoT



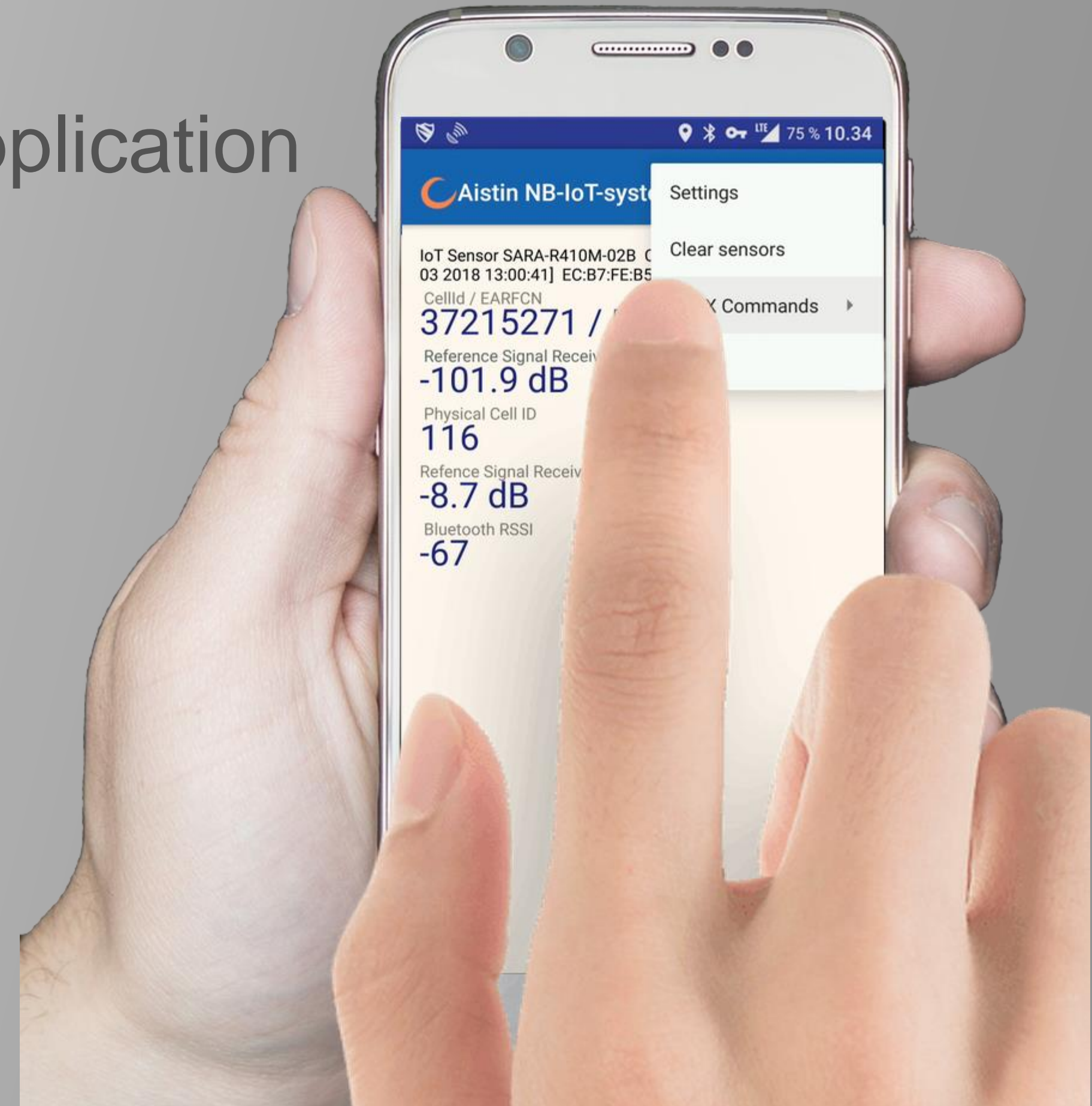
Building of IoT Sensor from modules

» Select suitable casing for IoT setup



Building of IoT Sensor from modules

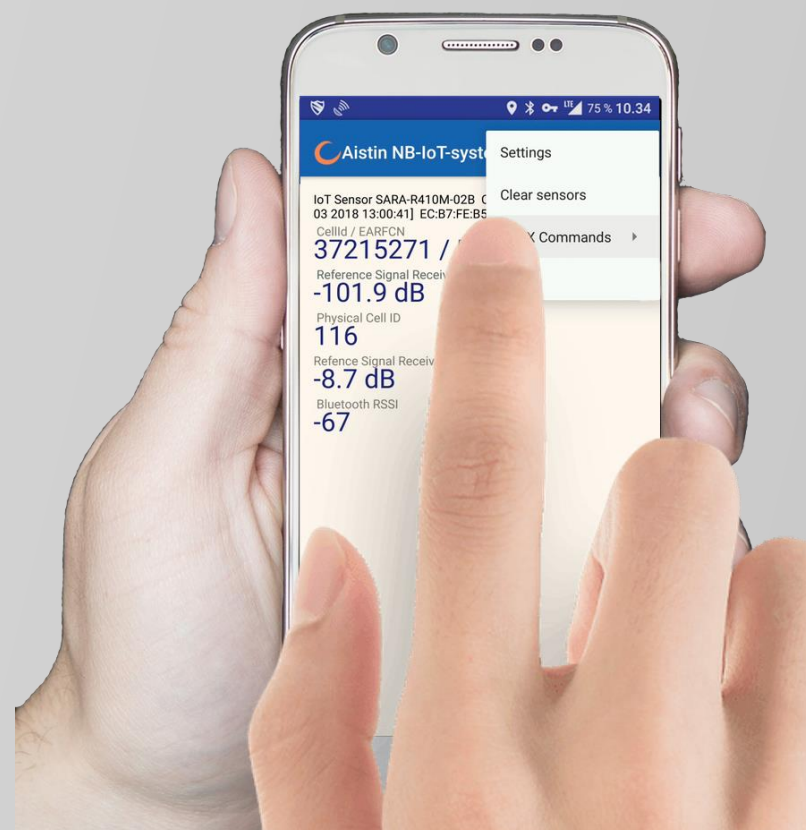
- » Connect Aistin Sensor into IoT Network
- » Local Bluetooth connection with mobile application



Aistin Software Platforms

Mobile

Aistin Mobile
Application Platform



Device

Tailored Customer
Solutions

Customer Application Logic

Customer Algorithms

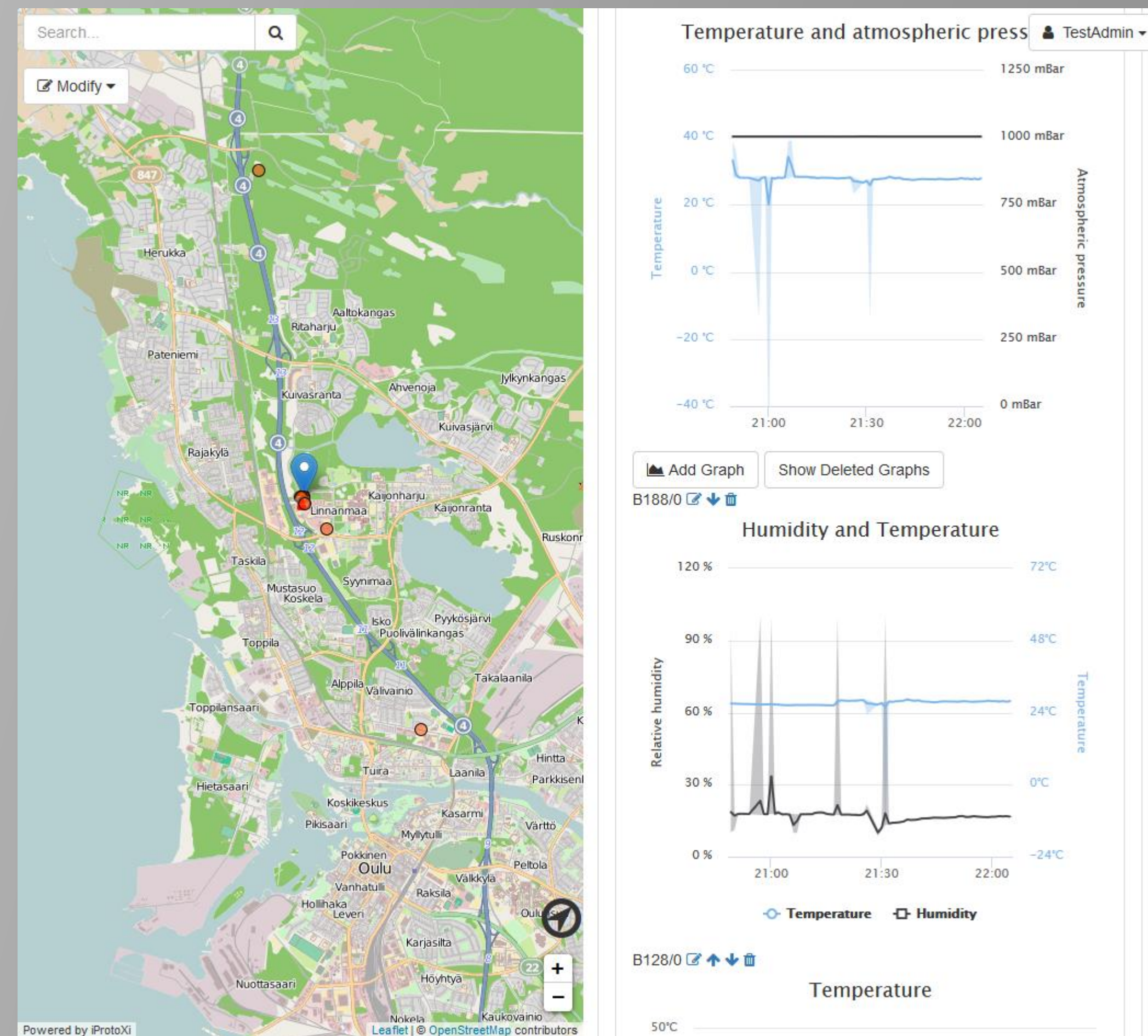
Aistin Device SW Platform

Cloud

Aistin Cloud Platform

iProtoXi Cloud Services

- » Cloud services allows users to easily connect, manage, monitor and control IoT devices and sensors remotely via internet with modern web technologies.
- » Device and User Management
- » Interfacing 3rd party clouds
- » Interfacing AI



Thank you!

» Any questions?

